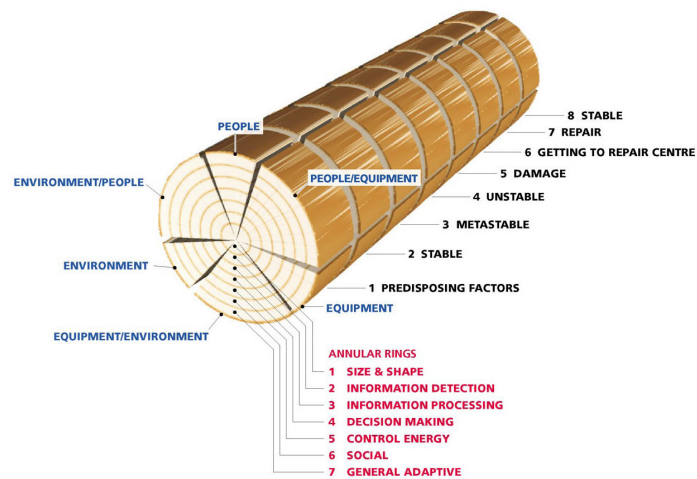


ART-TTM

ART-TTM (meaning Analysis Reference Tree-TrunkTM) is our advanced version of the Essential FactorsTM model.

It takes the basic model and adds 2 levels of complexity. The first level introduces an incident timeline for analysis. The timeline contains the powerful concept of 'Metastability' which provides significant opportunities for increased understanding of the incident.

The first level also contains the concept of damage, or potential damage, as the consequence of an energy exchange. This model dovetails with the Energy ConceptsTM approach of Risk Management. At the second level of complexity, seven additional focussing questions are applied to further enhance the understanding of the incident and identification of effective points of control.



Utilising the ART-TTM model in your organisation, for major incidents, will allow you to more fully understand an incident and identify an increased number of effective points of control for the future. It provides you with an improved opportunity to prevent the recurrence of future major incidents.

The ART-TTM model is unlike other analysis models in that it is scalable in complexity. The basic Essential FactorsTM model can be used for lower consequence incidents and can be scaled up to the ART-TTM model for more major incidents. No other incident investigation model has this capability. This allows for a consistent approach across all investigations.

The Essential FactorsTM and ART-TTM models can be used as the basis for all your investigations or can be used to complement your existing analysis model.



Please contact us if you would like to discuss attending our next public ART-T course.

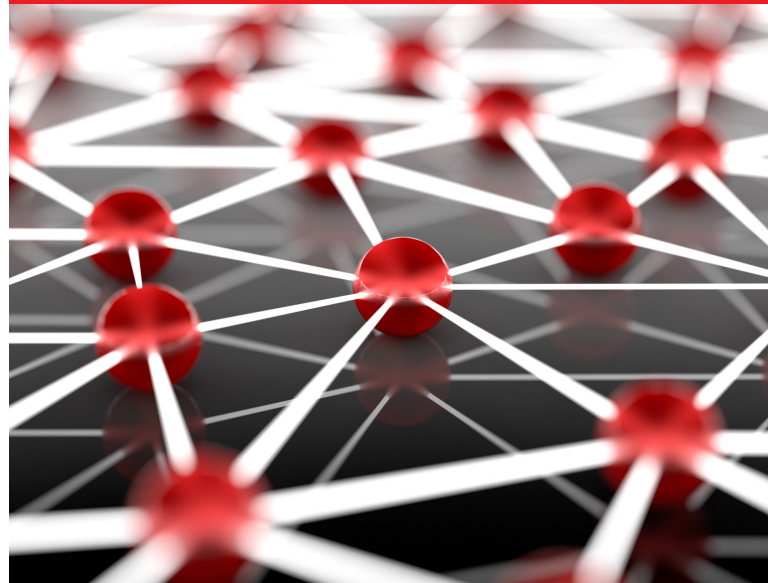


Next Steps

If you would like to discuss an **ART-T™** course or how InterSafe could assist you, please contact one of our team on:

+61 7 3895 8111

or enquiries@intersafe.com.au



Who is InterSafe?

InterSafe specialises in incident investigation. InterSafe has assisted our clients in effectively controlling the future through preparation of more than 10,000 comprehensive incident reports (dealing mostly with fatal/permanently disabling occurrences) throughout 60 years of collective experience.

This experience has led to a unique way of thinking about, investigating and preventing incidents. InterSafe shares these powerful and effective investigation models and techniques through a range of courses and services.



InterSafe
Protecting People

Telephone: 1800 8111 01

enquiries@intersafe.com.au
www.intersafe.com.au

InterSafe ABN 53 071 971 376

Level 1, 905 Stanley Street East
[PO Box 7338]
East Brisbane, Qld 4169 Australia